

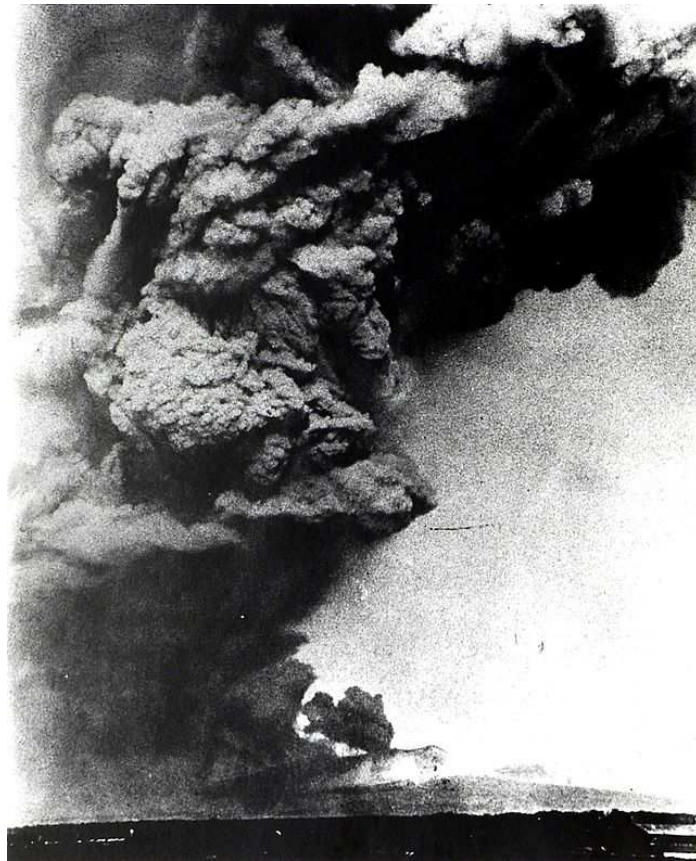
Hokkaido

Mount Tarumae

Last eruption: 1981

Height: 1041 meters

Located in [Shikotsu-Toya National Park](#) beside [Lake Shikotsuko](#), Mount Tarumae is one of Japan's most active volcanoes. It most recently erupted in 1981. Hikers can reach the summit in under an hour from a parking lot at the 8th Station and are rewarded with impressive views of the desolate landscape as well as Lake Shikotsuko below. It is possible to circle the crater in about two hours, but visitors are not allowed to enter the interior of the crater due to poisonous gases.



1909 Tarumae Eruption

